

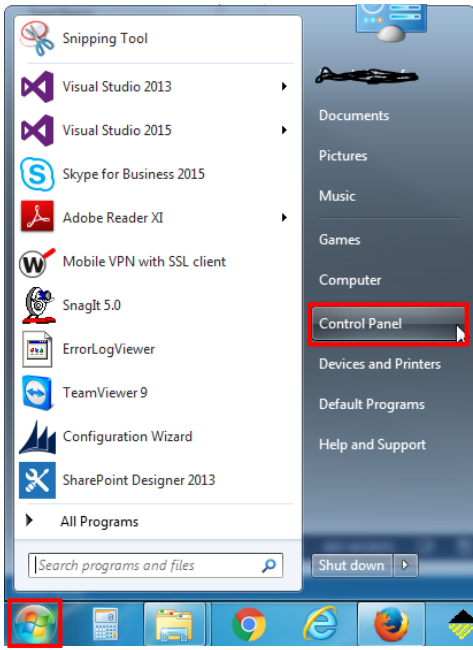
## Change the IP Name

TCP/IP defines how your computer communicates with other computers.

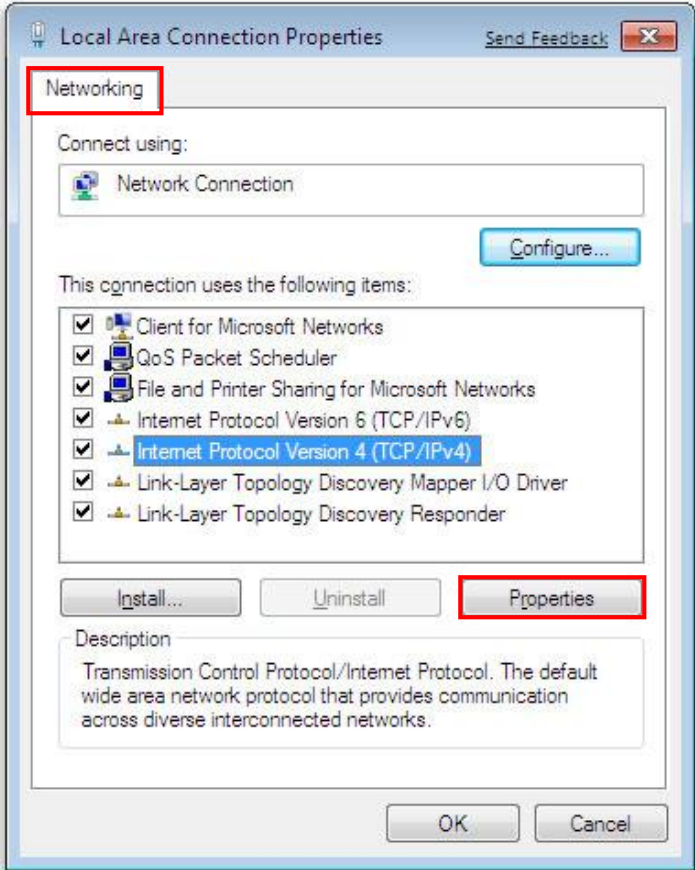
To make it easier to manage TCP/IP settings, we recommend using automated Dynamic Host Configuration Protocol (DHCP). DHCP automatically assigns Internet Protocol (IP) addresses to the computers on your network, if your network supports it. If you use DHCP, then you don't have to change your TCP/IP settings if you move your computer to another location, and DHCP doesn't require you to manually configure TCP/IP settings, such as Domain Name System (DNS) and Windows Internet Name Service (WINS).

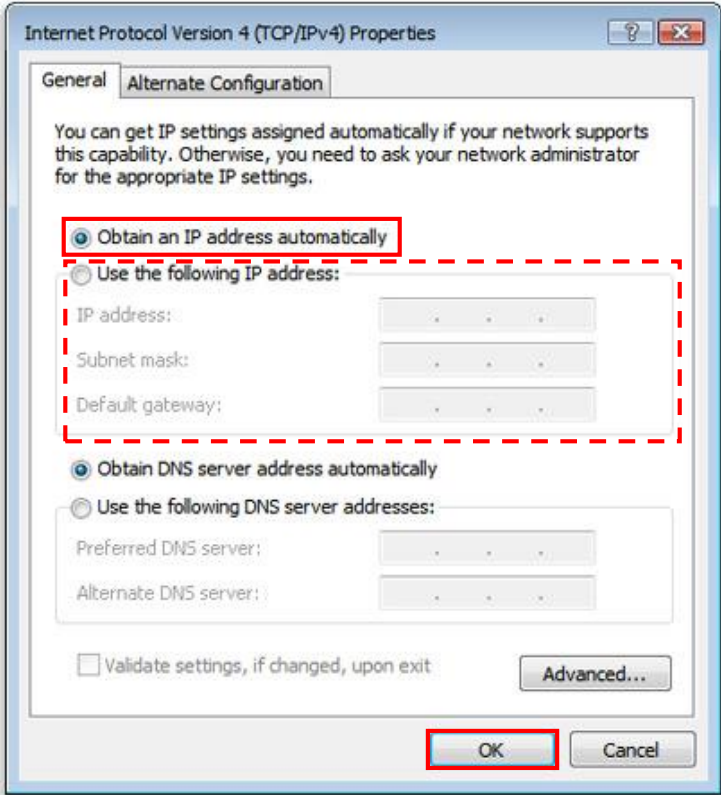
The work instruction below will explain how to enable DHCP or change other TCP/IP settings.

### Task

Step	Action	Result
1.	Open Network Connections by clicking the Start button, and then clicking Control Panel. In the search box, type adapter, and then, under Network and Sharing Center, click View network connections.	 <p>The screenshot shows the Windows Start menu search interface. The search bar at the top contains the text 'adapter'. Below the search bar, a list of search results is displayed, including 'Snipping Tool', 'Visual Studio 2013', 'Visual Studio 2015', 'Skype for Business 2015', 'Adobe Reader XI', 'Mobile VPN with SSL client', 'Snagit 5.0', 'ErrorLogViewer', 'TeamViewer 9', 'Configuration Wizard', and 'SharePoint Designer 2013'. At the bottom of the search results, there is a search bar with the text 'Search programs and files' and a 'Shut down' button. The 'Control Panel' item is highlighted with a red rectangular box, indicating it is the selected result.</p>

<p>2.</p>	<p>In the search box, type <b>adapter</b>.</p> <p>The appearance of the screen may change depending on your display settings.</p>	<p>A screenshot of the Windows Control Panel search results page. The search bar at the top right contains the word "adapter". Below the search bar, a grid of control panel items is displayed, including Action Center, Administrative Tools, AutoPlay, Backup and Restore, Biometric Devices, BitLocker Drive Encryption, Color Management, Credential Manager, Date and Time, Default Programs, Desktop Gadgets, Device Manager, Devices and Printers, Display, Dolby Home Theater, Ease of Access Center, Flash Player (32-bit), Folder Options, Fonts, Getting Started, HomeGroup, Indexing Options, Intel(R) Graphics and Media, Internet Options, Java (32-bit), Keyboard, and Lenovo - Fingerprint Reader.</p>
<p>3.</p>	<p>Under Network and Sharing Center, click <b>View network connections</b>.</p>	<p>A screenshot of the Windows Control Panel Network and Sharing Center. The "Network and Sharing Center" link is highlighted with a red box. Below it, the "View network connections" link is also highlighted with a red box.</p>
<p>4.</p>	<p>Right-click the connection that you want to change, and then click <b>Properties</b>.</p> <p>If you're prompted for an administrator password or confirmation, type the password or provide confirmation.</p>	<p>A screenshot of the Windows Network Connections window. The "Local Area Connection 2" icon is highlighted with a red box. A context menu is open over it, and the "Properties" option is highlighted with a red box.</p>

<p>5.</p>	<p>Click the Networking tab.</p> <p>Under This connection uses the following items, click either:</p> <ul style="list-style-type: none"> <li>• <b>Internet Protocol Version 4 (TCP/IPv4)</b> or</li> <li>• <b>Internet Protocol Version 6 (TCP/IPv6)</b></li> </ul> <p>Click the <b>Properties</b> button.</p>	
-----------	--	---

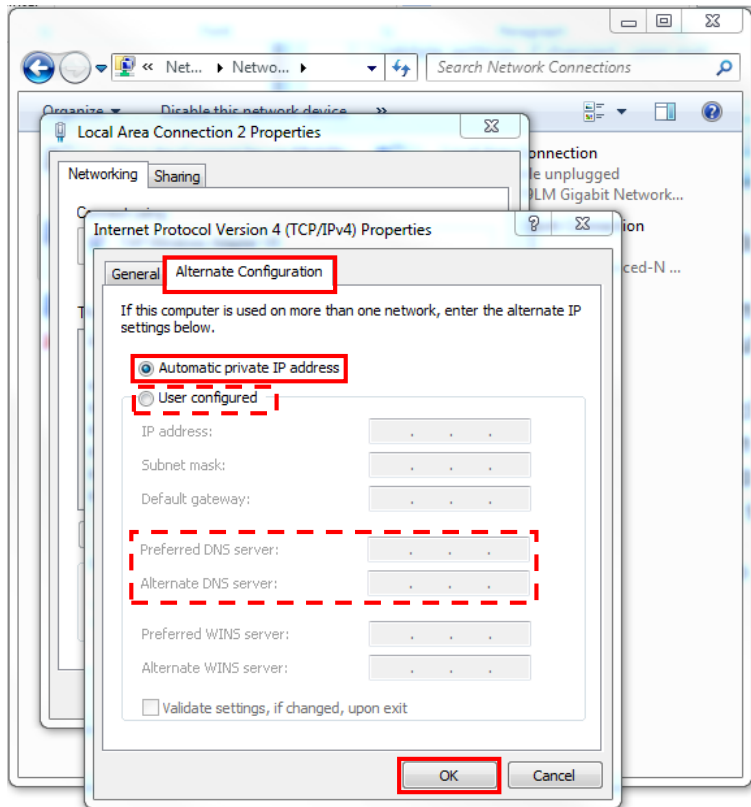
<p>6.</p>	<p>To specify IPv4 IP address settings, do one of the following:</p> <ul style="list-style-type: none"> <li>To get IP settings automatically using DHCP, click <b>Obtain an IP address automatically</b>.</li> <li>To specify an IP address, click <b>Use the following IP address</b>, and then, in the IP address, Subnet mask, and Default gateway boxes, type the <b>IP address</b> settings.</li> </ul> <p>Click the <b>OK</b> button.</p>	
-----------	---	---

7.

To specify DNS server address settings, click the **Alternate Configuration** tab and do one of the following:

- To get a DNS server address automatically using DHCP, click **Obtain DNS server address automatically**.
- To specify a DNS server address, click **Use the following DNS server addresses**, and then, in the Preferred DNS server and Alternate DNS server boxes, type the **addresses** of the **primary** and **secondary DNS servers**.

Click the **OK** button.



**Task completed.**

### Summary